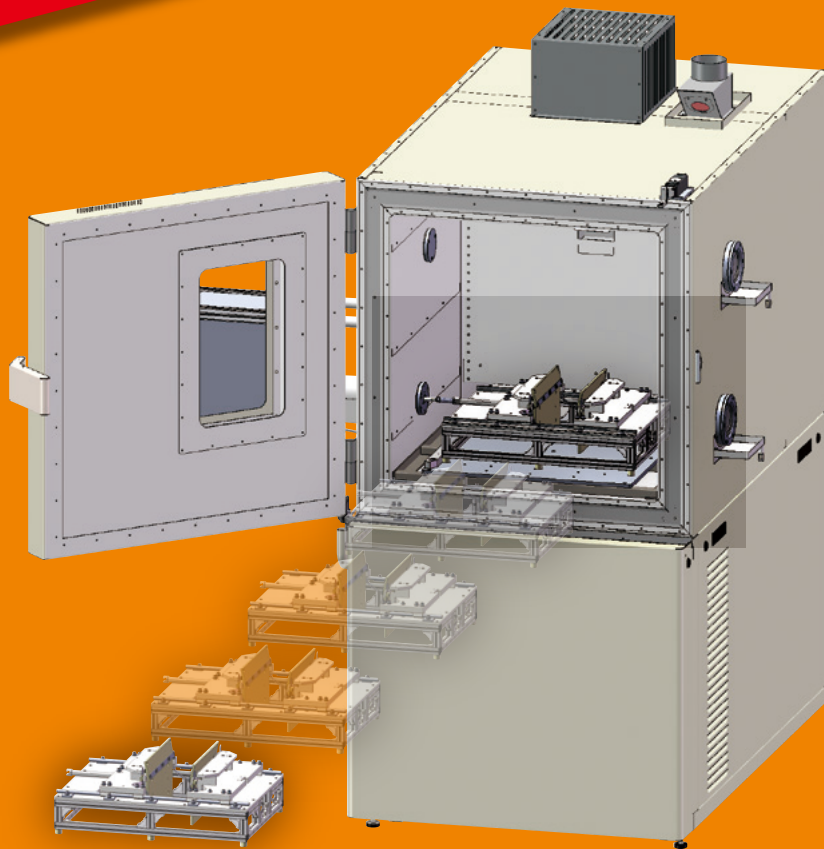
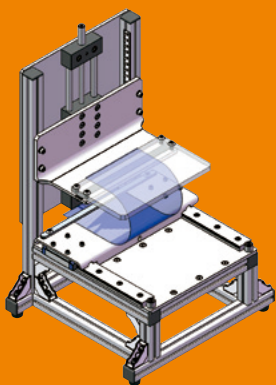


The Industry's
First
Integrated
Control System



ENDURANCE TESTING SYSTEM with Chamber



Endurance Testing System is available on constant temperature and constant humidity, moreover inter-connected environment and operation.

This equipment can control all together not only temperature, humidity but also sample operation.
Various endurance tests are realized in any environment depending on test jig as your test purpose.

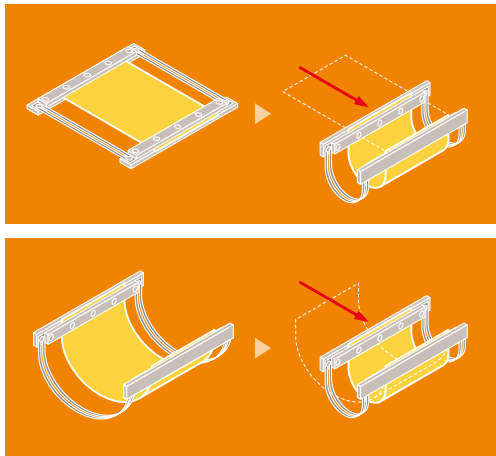
Tension Free U-shape Folding Test with Chamber CL09-typeC01-FSC90

It can realize a natural bending test like hand-operation without unnecessary tension for sheet-shaped sample.

Basic Motions



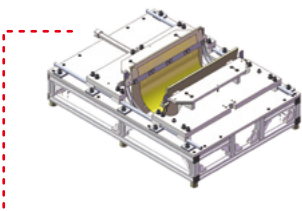
Attachment Motions



Attachment

U-shape Folding Test Jig

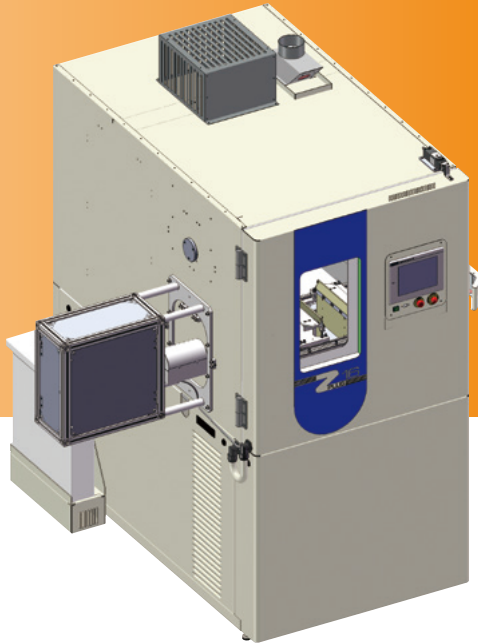
Attach a sample to tilt clamp with sample straightened horizontally, then repeat a stretch operation. When the tilt clamp move downward at shrinking sample, sample will bend on its own. This equipment is possible to test with tilt clamp fixed "horizontally" or "vertically".



Composition

Endurance Testing System with Chamber typeC01

Tension Free U-shape Folding Test Jig DM-FSC90



Various environment.

This equipment realizes low-temperature, high-temperature and high-humidity.
Operating Temperature: -40° - +150°C (note)
Operating Humidity: 30%RH - 95%RH
Dimensions: W1700mmxD1600mmxH2100mm
Net Weight: Approx. 700kg

(note) When use the attachment DM-FSC90, DM-FUC90, operating temperature is up to 90°C. We can product an attachment available over 90°C.

Infinite possibilities

It is possible to test various sample not only sheet-shaped sample like flexible devices but also linear-shaped sample like harness by changing test attachments.

Compatible endurance and quietness.

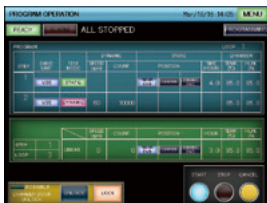
Power source is the mechanical linking structure and adopts resin material on gear, so it can realize high endurance and quietness.

Wide range

It can examine a linear motion test with max. stroke ±120mm, by changing an attachment a rotary motion test with max. angle ±180°.

Integrated Control System

Temperature, humidity and sample operation are controlled all together by one touch panel.



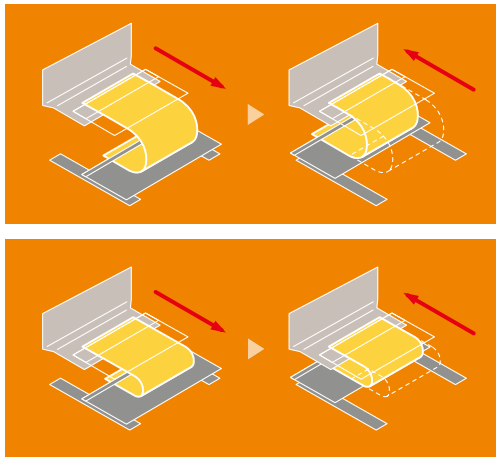
U-shape Sliding Plate Test with Chamber CL09-typeC01-FUC90

It can realize a repetition test for sheet-shaped sample.

Basic Motions



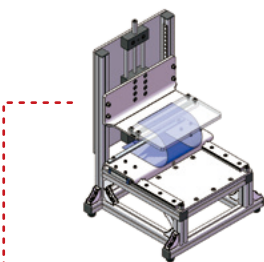
Attachment Motions



Attachment

U-shape Sliding Plate Test Jig (1 lane)

To fix a sample with U-shaped, then lower clamp operates in a straight line.



Composition

Endurance Testing System with Chamber typeC01

U-shape Sliding Plate Test Jig DM-FUC90



To improve our products, please note that their outer appearances and/or designs are subject to change without notice.

Our product information is also available on <http://www.yuasa-system.jp/en>

YUASA SYSTEM CO., LTD.

<http://www.yuasa-system.jp/en>



HEAD OFFICE

No.6 KUME, KITA-KU, OKAYAMA-CITY 701-0144 JAPAN

KIBITSU FACTORY

2292-1 KIBITSU, KITA-KU, OKAYAMA-CITY 701-1341 JAPAN
PHONE : +81-86-287-9030 FAX : +81-86-287-2298

TOKYO OFFICE

SHINBASHI SN BLDG. 5-7-10 SHINBASHI, MINATO-KU, TOKYO 105-0004 JAPAN
PHONE : +81-3-3578-8515 FAX : +81-3-3578-8516

OSAKA OFFICE

SHIN-OSAKA IKUSHIMA BLDG 5-1-3 MIYAHARA, YODOGAWA-KU, OSAKA-CITY 532-0003 JAPAN
PHONE : +81-6-6394-8175 FAX : +81-6-6397-2632



Safety Note

To ensure your safe and proper usage, please observe all the manuals before using these machines.

Contact Us