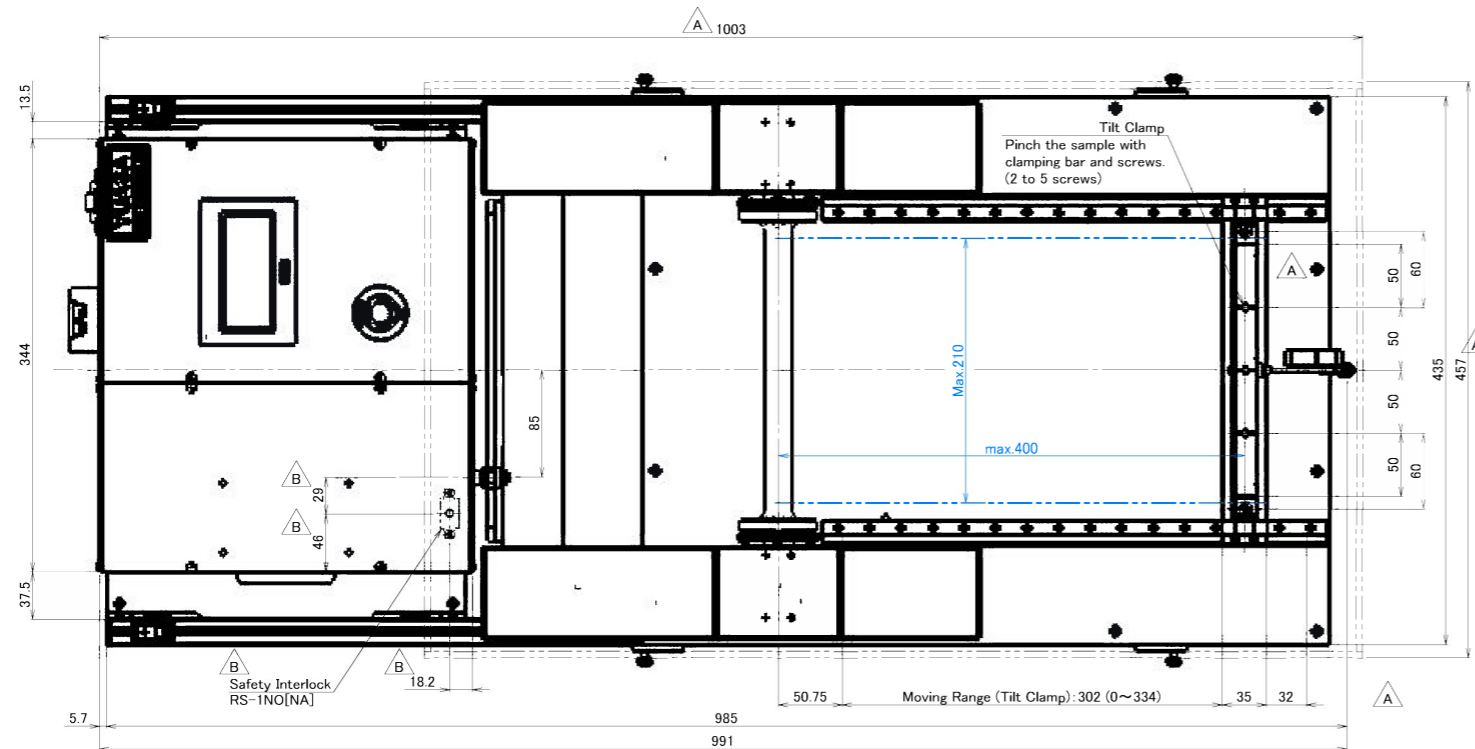
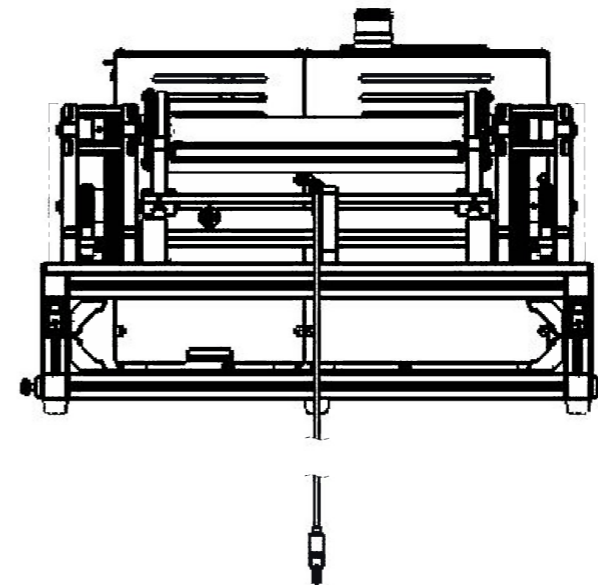
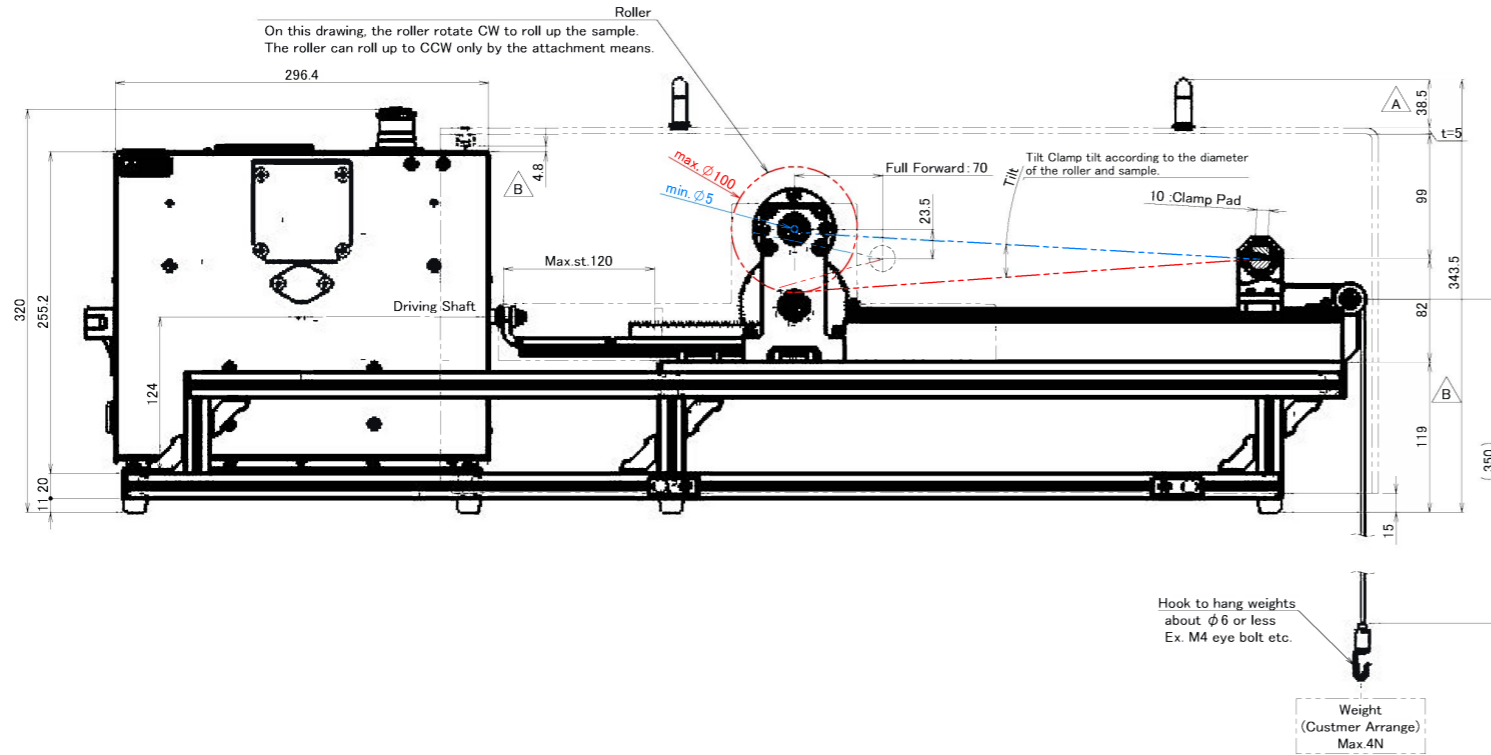
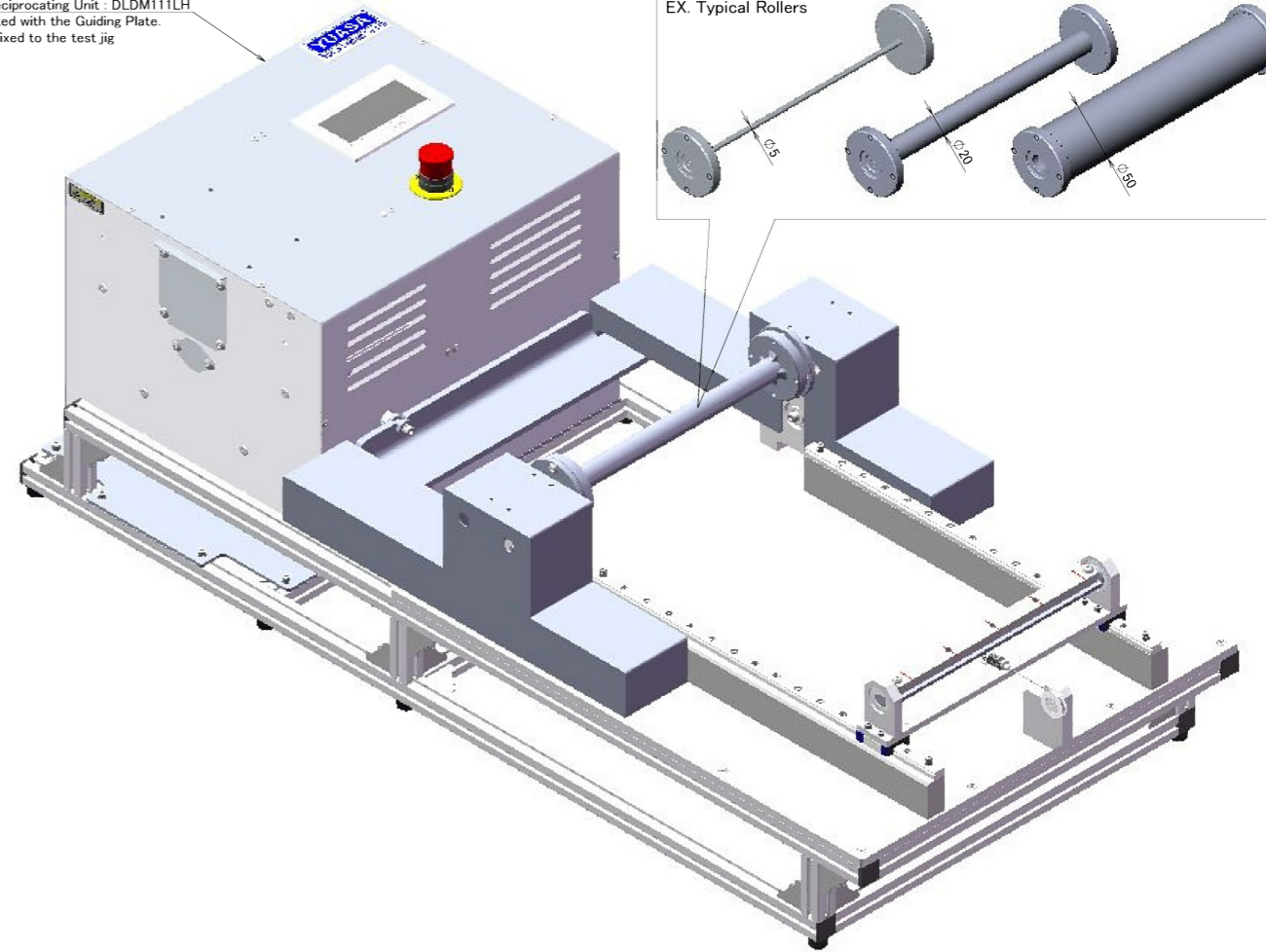
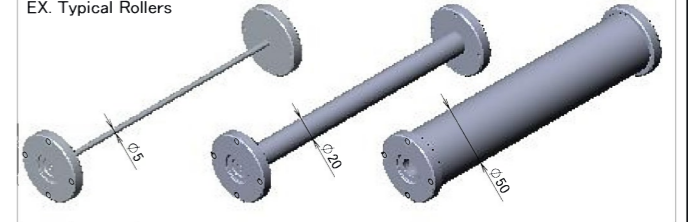


改訂 REV.	注記 REVISION	担当者 BY	日付 DATE
A	Add - Cover and Interlock	N. Ando	Feb. 10, 2016
B	Change - specification of Cover and Interlock	A.M	Nov. 01, 2016

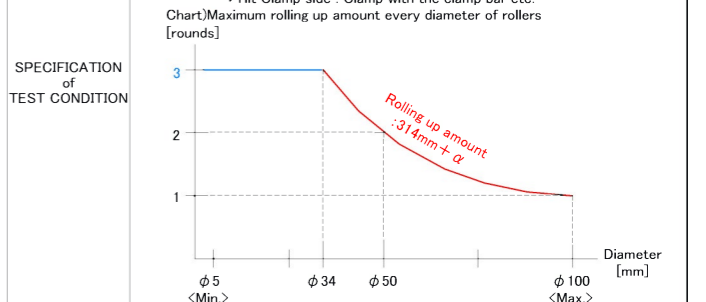


Linear Reciprocating Unit : DLDM111LH  
It is located with the Guiding Plate.  
It is not fixed to the test jig

EX. Typical Rollers



- OVER VIEW**
- Testing components repeat a motion roll up to unroll.
  - The roller rotate with "rack & pinion".
- target**
- Sheet or Linear samples : max. 3 mm
  - Sample's thickness : max. 210mm
  - Sample's width : max. 3 rounds or 314 mm (refer the below chart)
  - Winding amount : φ 5~100 mm (Standard Acc : φ 20mm)
  - Diameter of Roller : \* More than the second are sold separately.
- Reciprocating speed**
- max. 90 r/min
  - \* The weight should not hop.
- Weight (Tension)**
- max. 4.0 N
- Attachment means for sample :**
- ⇒ Roller side : Attach with adhesive tape, by frictional force etc.
  - ⇒ Tilt Clamp side : Clamp with the clamp bar etc.



- MASS**
- Testing Machine : about 17 kg
  - Test Jig : about 23 kg (without Roller)
  - Cover, Test Jig : about 6 kg

材質 MATERIAL	第3角法 THIRD ANGLE	尺 度 SCALE	TITLE
質量 MASS	On the margin	1:3	Desktop Model Endurance Testing Machine DLDM111LH
表面処理 SURFACE PROCESSING	作成日付 DATE	承認 APPROVED	称 Test Jig, Rolling Up
熱処理 HEAT TREATMENT	検 図 CHECKED	設計 DESIGNED	DWG. No. DM20S035-02
			B