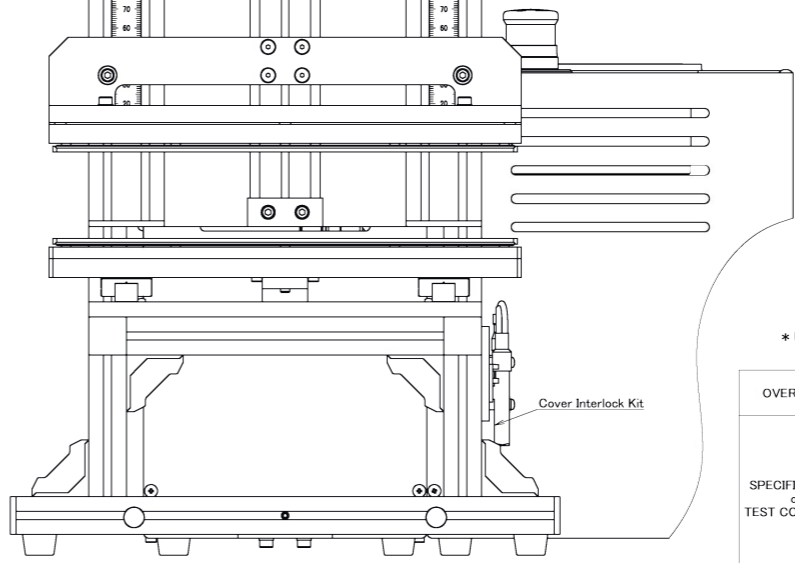
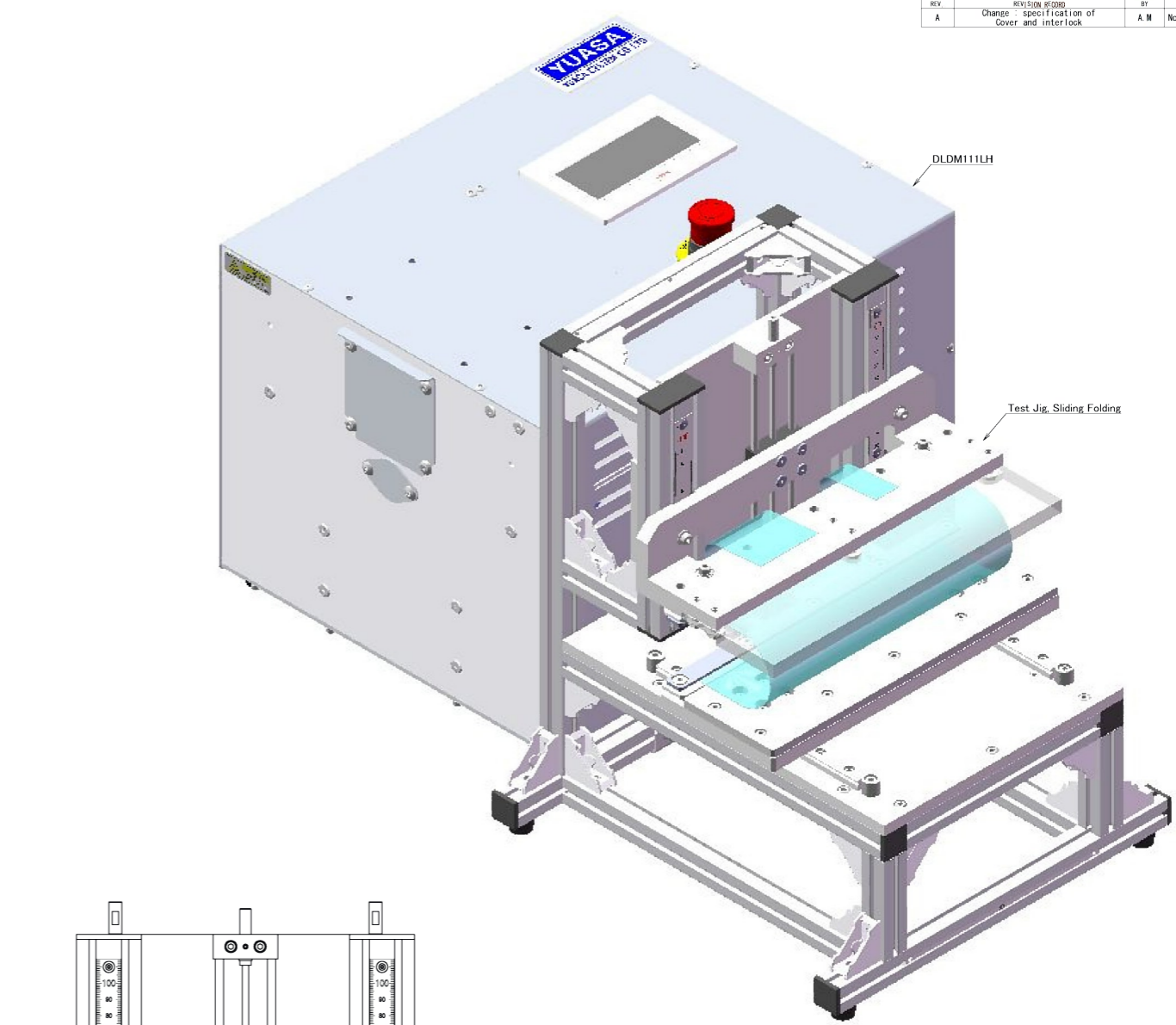
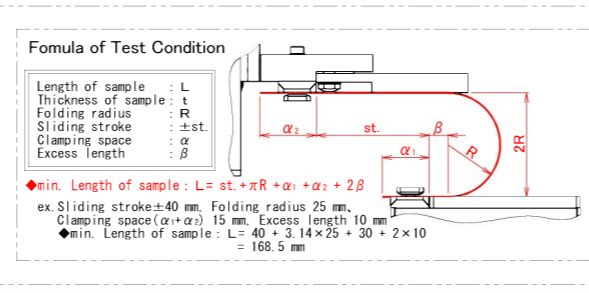
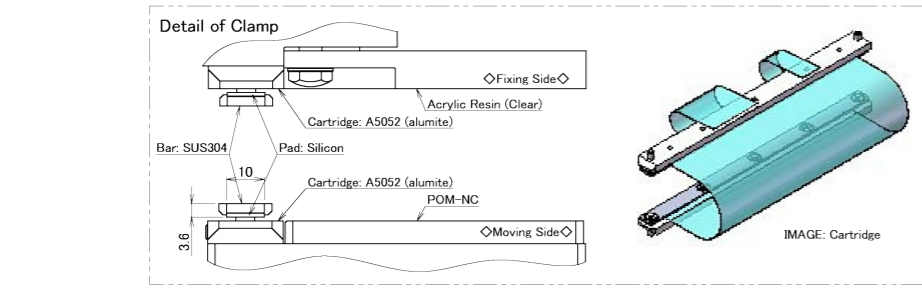
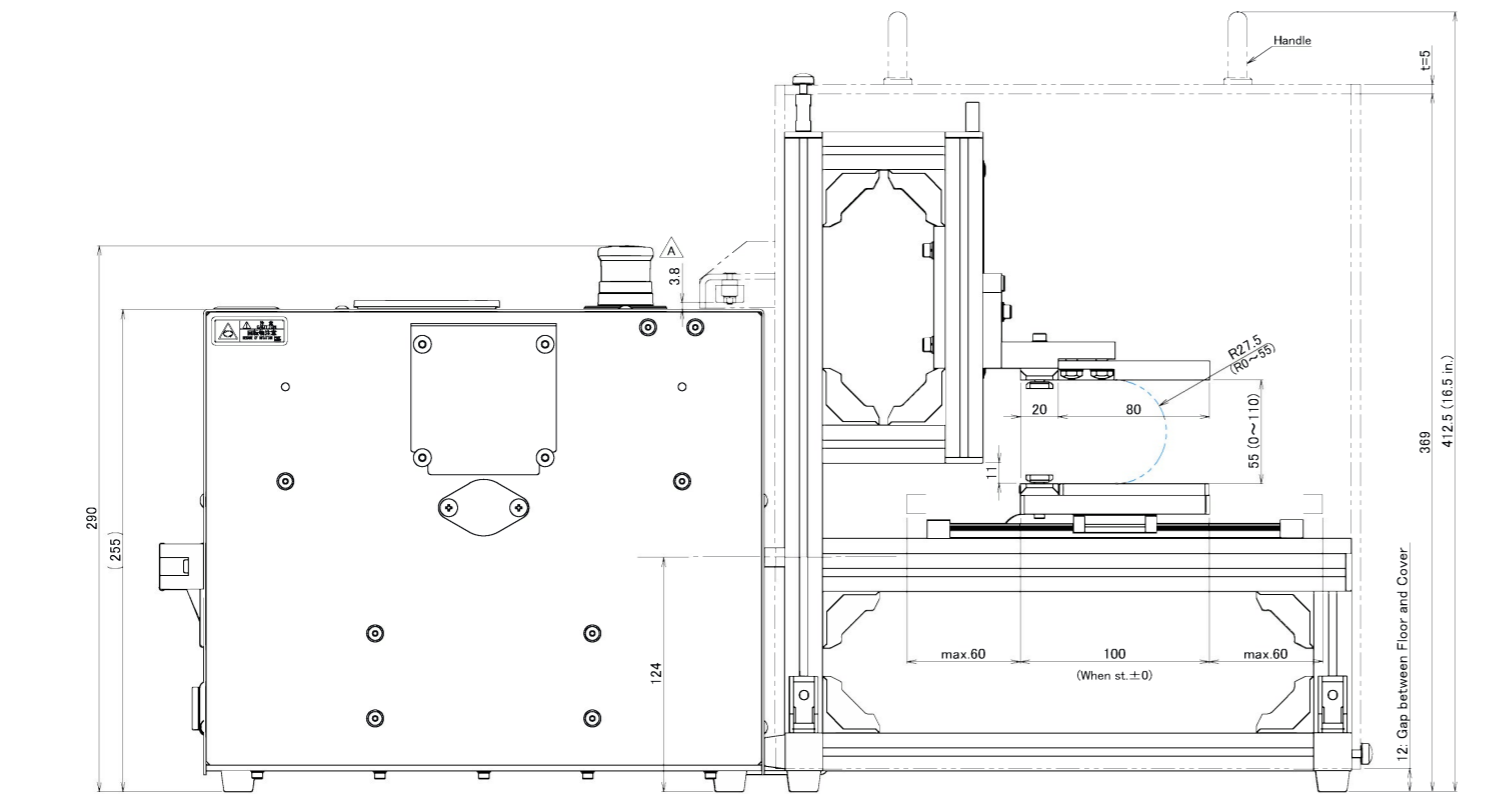
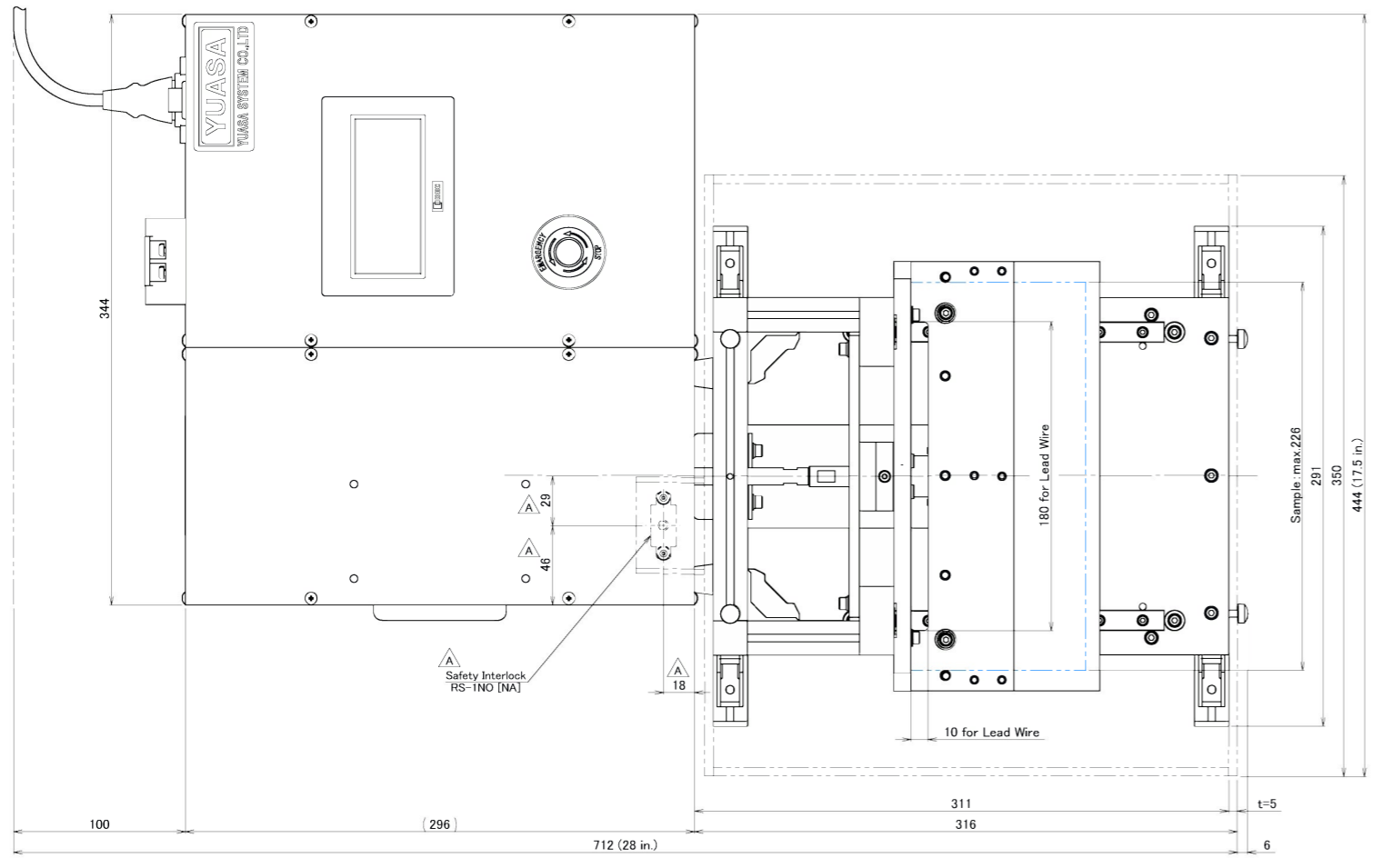


Specifications are subject to change without notice.

改訂 REV.	注記 REVISION	担当 BY	日付 DATE
A	Change : specification of Cover and interlock	A.M	Nov. 10, 2016



* Units of weights and measures shall be expressed in terms of the metric system (kg & mm)

OVER VIEW	<ul style="list-style-type: none"> Testing components fold and slide samples. Can adjust folding radius with the position of Clamp, fixing side. 		
SPECIFICATION of TEST CONDITION	<ul style="list-style-type: none"> Thickness of sample : max. 3 mm Width of sample : max. 226 mm Folding radius : 0~55 mm <ul style="list-style-type: none"> * Can't set radius less than "Thickness of sample + 5" when use clamps (accessories). * Set samples on each sides with adhesive tape (without clamp bar) when screws interfereit. Sliding stroke : 0~±60 mm Operating Speed : 10~90 r/min Electric Insulation : Samples are insulated from Test Jig (exclude bars and screws). <p>* In addition, refer to an attached sheet for the detail of DLDM111LH.</p>		
INSTALLATION ENVIRONMENT	<ul style="list-style-type: none"> Temp. : +5~+40°C (41~104°F) Humi. : 15~85%Rh (No Condensation) 		
MASS	<ul style="list-style-type: none"> Testing Machine : about 17 kg (about 37.5 lb) Test Jig : about 7 kg (about 15.5 lb) Cover, Test Jig : about 4 kg (about 8.0 lb) 		
NOTE	<ul style="list-style-type: none"> Tool to set up is only hexagon bar wrench (3 mm) 		
材質 MATERIAL	第3角法 THIRD ANGLE PROJECTION	尺 度 SCALE	TITLE
質量 MASS	On the margin	1:2	Desktop Model Endurance Testing Machine DLDM111LH
表面処理 SURFACE PROCESSING	作成日付 DATE	May. 31, 2016	称 号 TEST Jig, Sliding Folding
熱処理 HEAT TREATMENT	承認 APPROVED	Y. Okazaki	図 番 DWG. No. ET221S002-005
	検 図 CHECKED	H. Sasaki	A
	設 計 DESIGNED	N. Ando	

- ◇Components in this drawing
- ET221A002-005 : Test Jig, Sliding Folding
- ET136A001-004 : Floating Joint
- ET1209A008-001 : Joint Bracket
- ET1500A003-028 : Cover, Test Jig