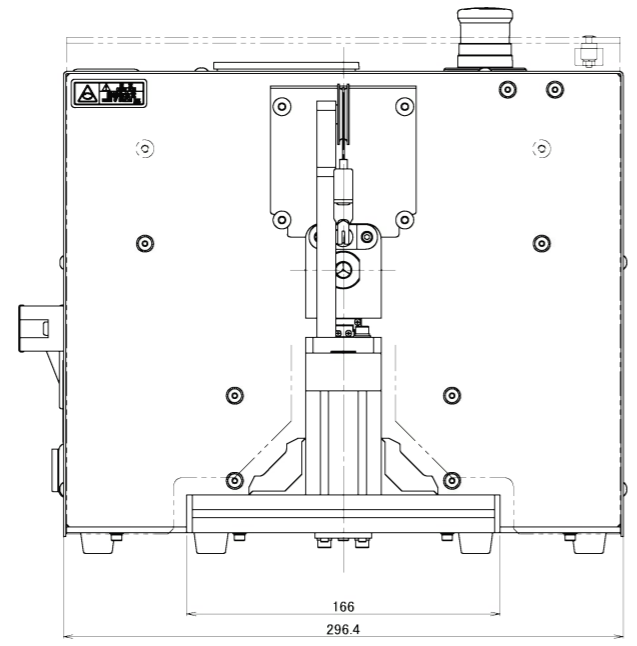
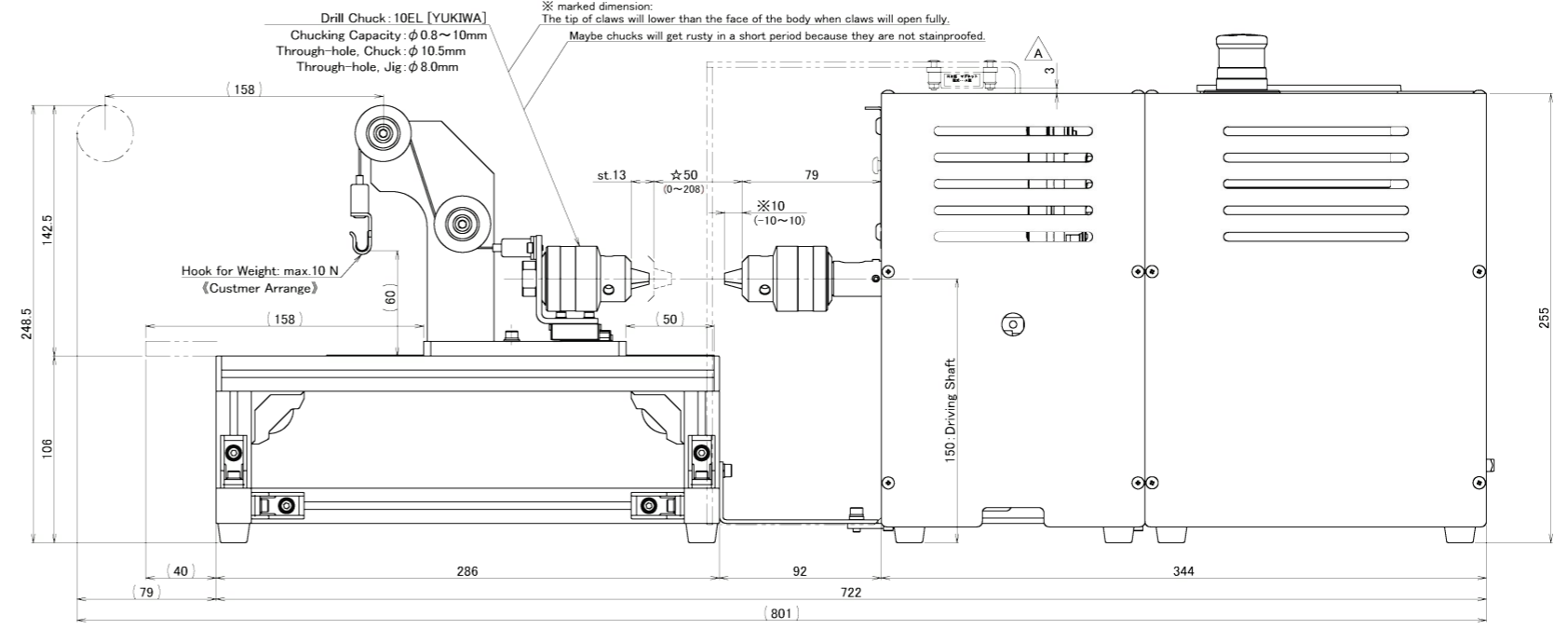
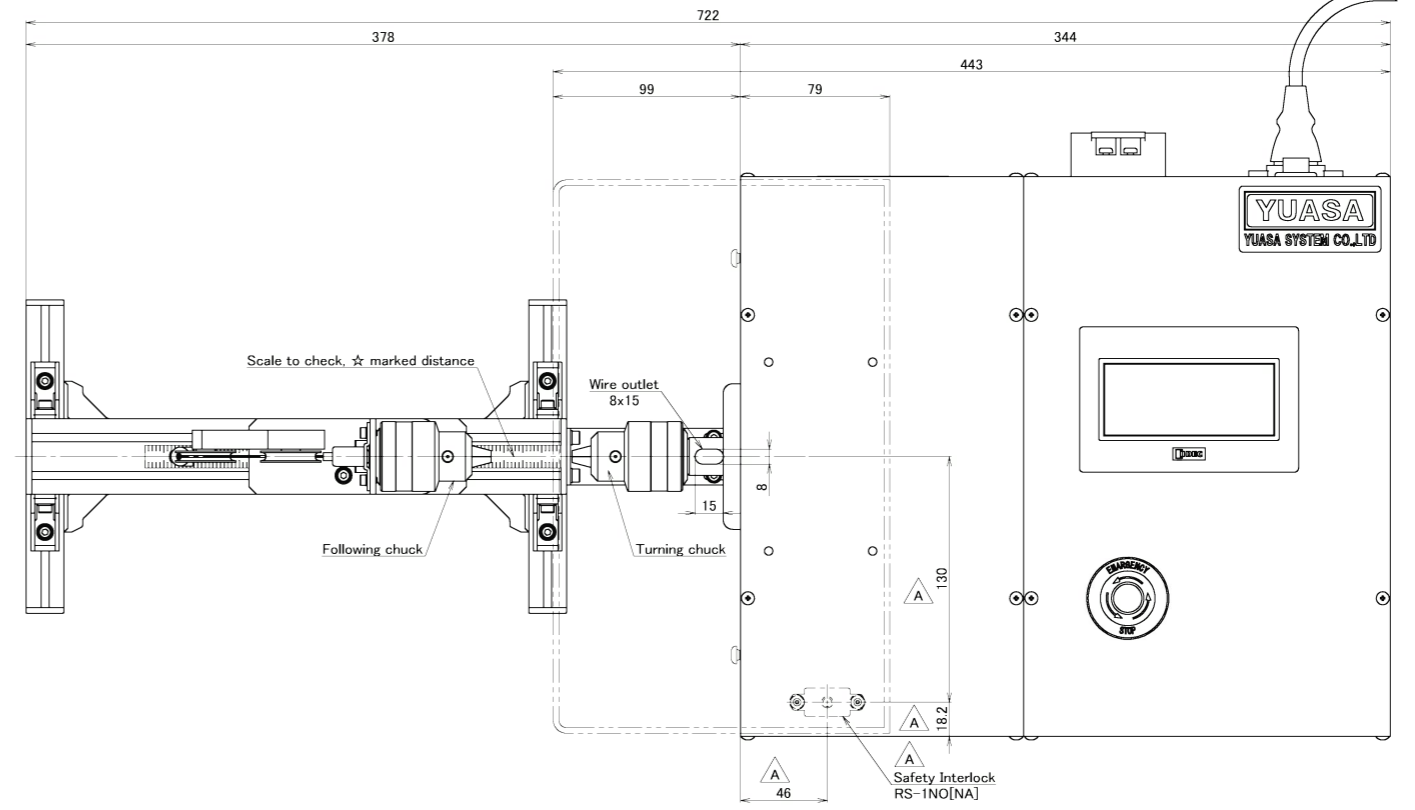
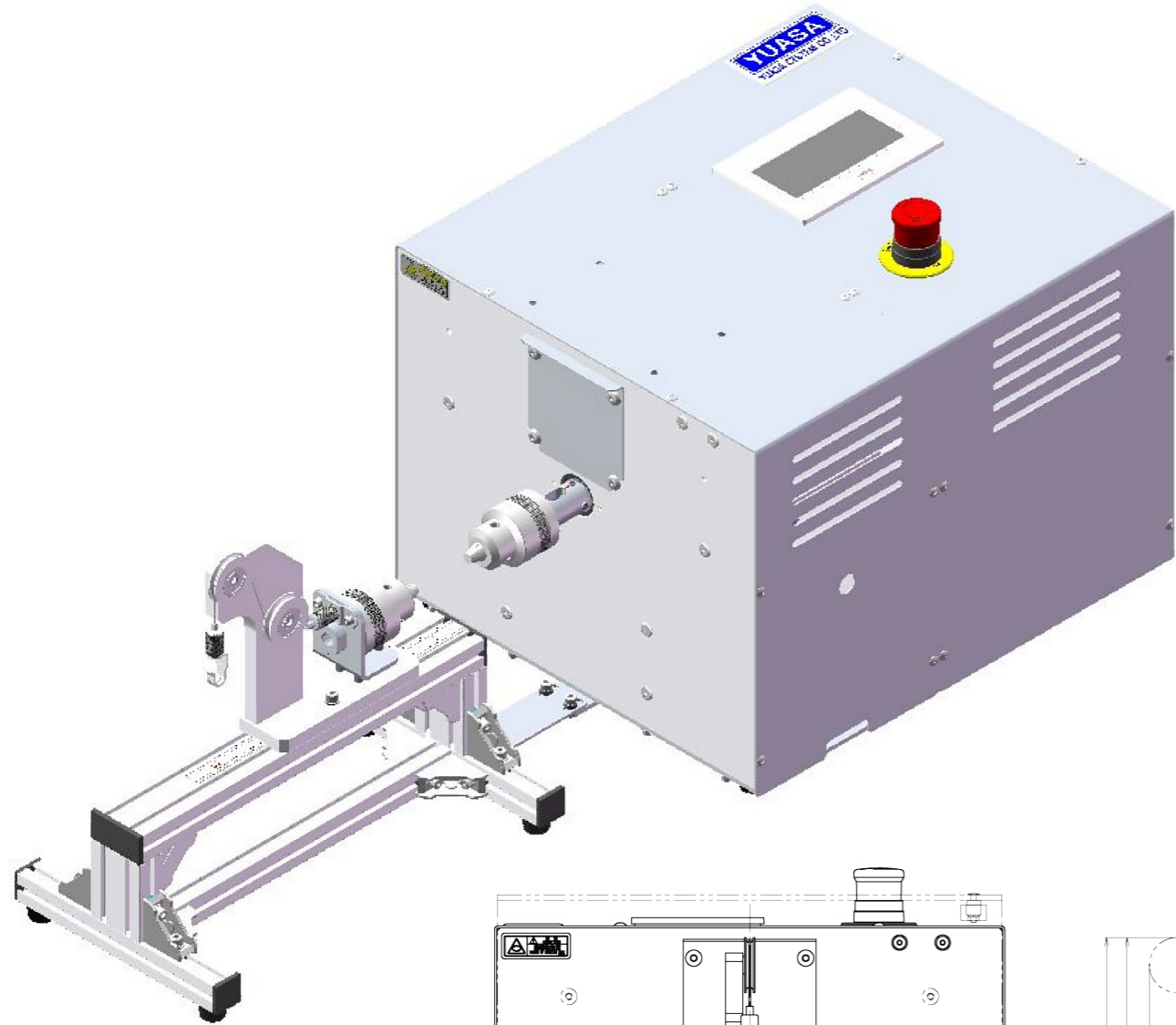


改訂	注記	担当	日付
A	Change : specification of Cover and Interlock	A.M	Nov. 02, 2016



OVER VIEW	<ul style="list-style-type: none"> Testing components twist the sample with turning chuck and following chuck is Following Chuck are moved by length of sample change. Should load some weights to return Following Chuck. 		
SPECIFICATION of TEST CONDITION	<ul style="list-style-type: none"> Sample : $\phi 0.8 \sim \phi 10$ mm Lead wire: max. 8 mm Torsion angle : $0 \sim \pm 270^\circ$ Torsion speed : $10 \sim 120$ r/min Torsion torque: max. 1 N·m 		
MASS	<ul style="list-style-type: none"> Testing Machine: about 17 kg (TCDM111LH) Turning Chuck : about 0.3 kg Following Chuck: about 1.6 kg Cover, Test Jig: about 0.7 kg 		
材質 MATERIAL	第3角法 THIRD ANGLE PROJECTION	尺 度 SCALE	TITLE 名
質量 MASS	On the margin	1:2	Desktop Model Endurance Testing Machine TCDM111LH
表面処理 SURFACE FINISHING	作成日付 DATE	承認 APPROVED	称
熱処理 HEAT TREATMENT	設計 DESIGNED	検 図 CHECKED	Test Jig, Torsion
	N. Ando	H. Sasaki	DWG. No.
			番
			DM20S010-02
			A