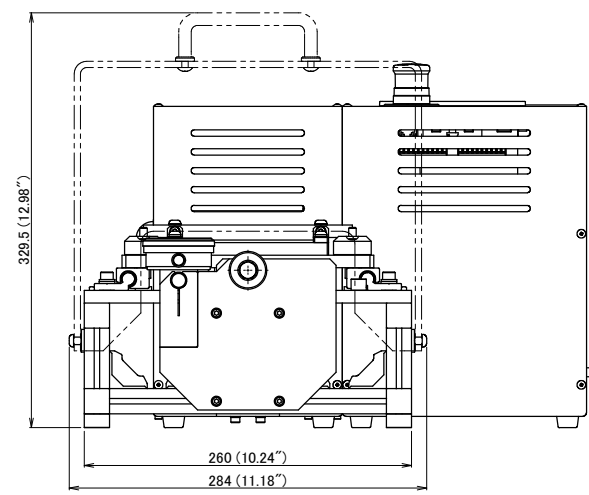
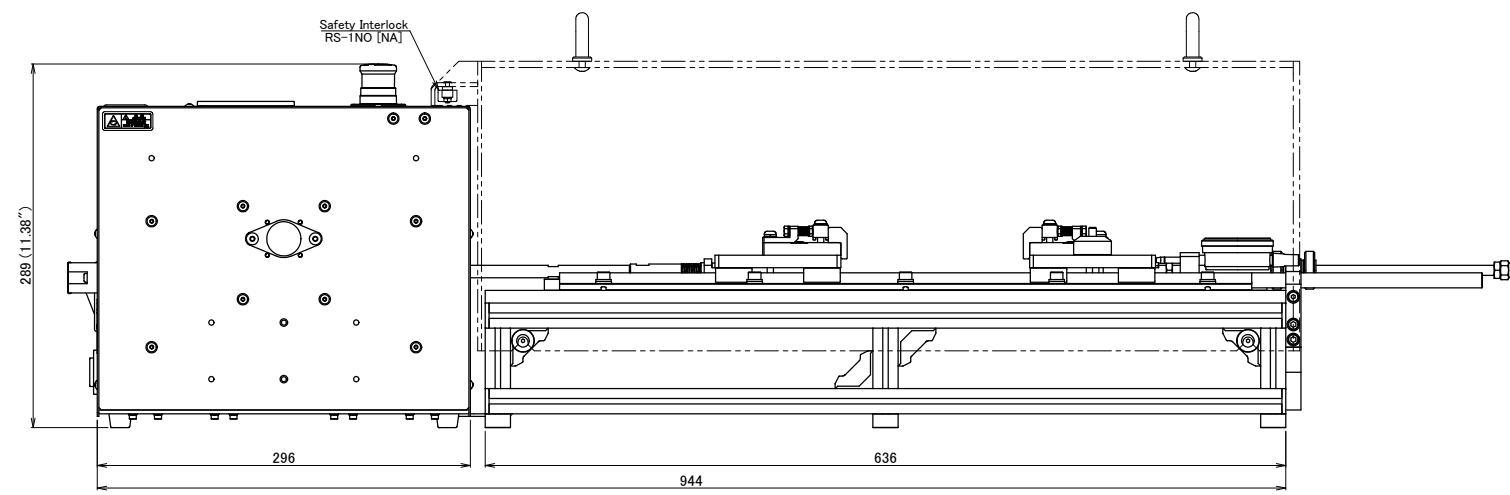
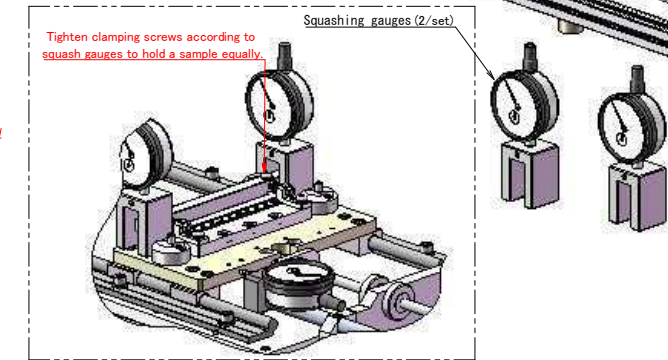
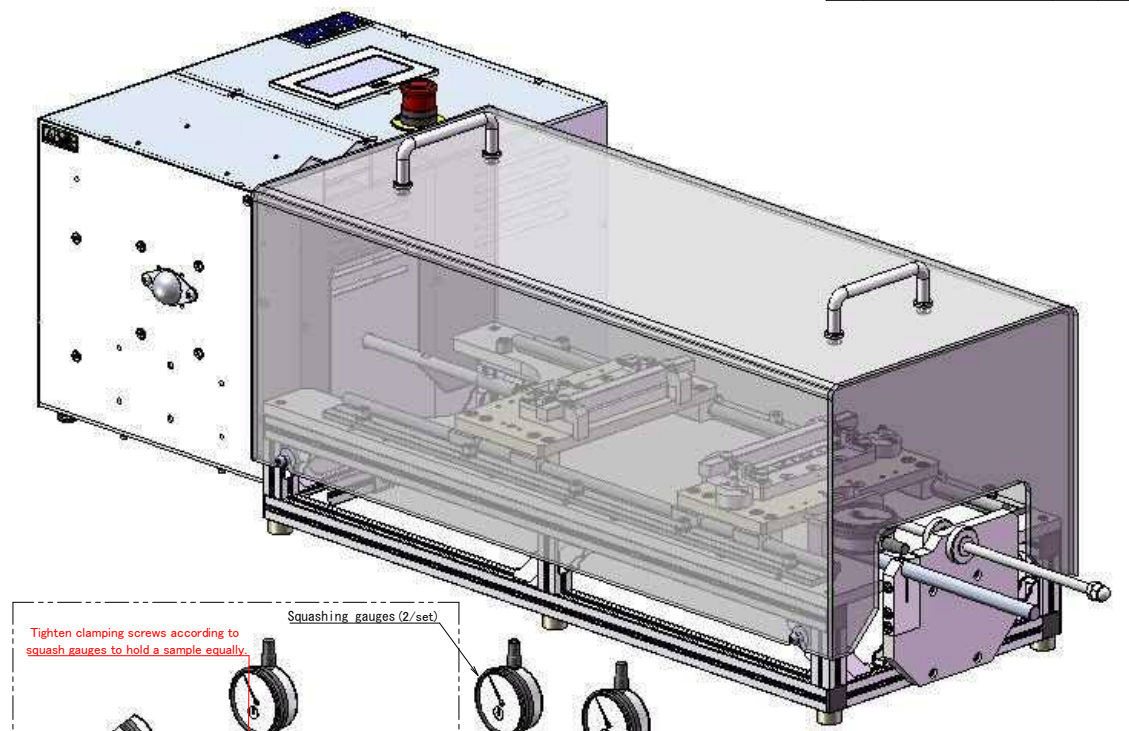
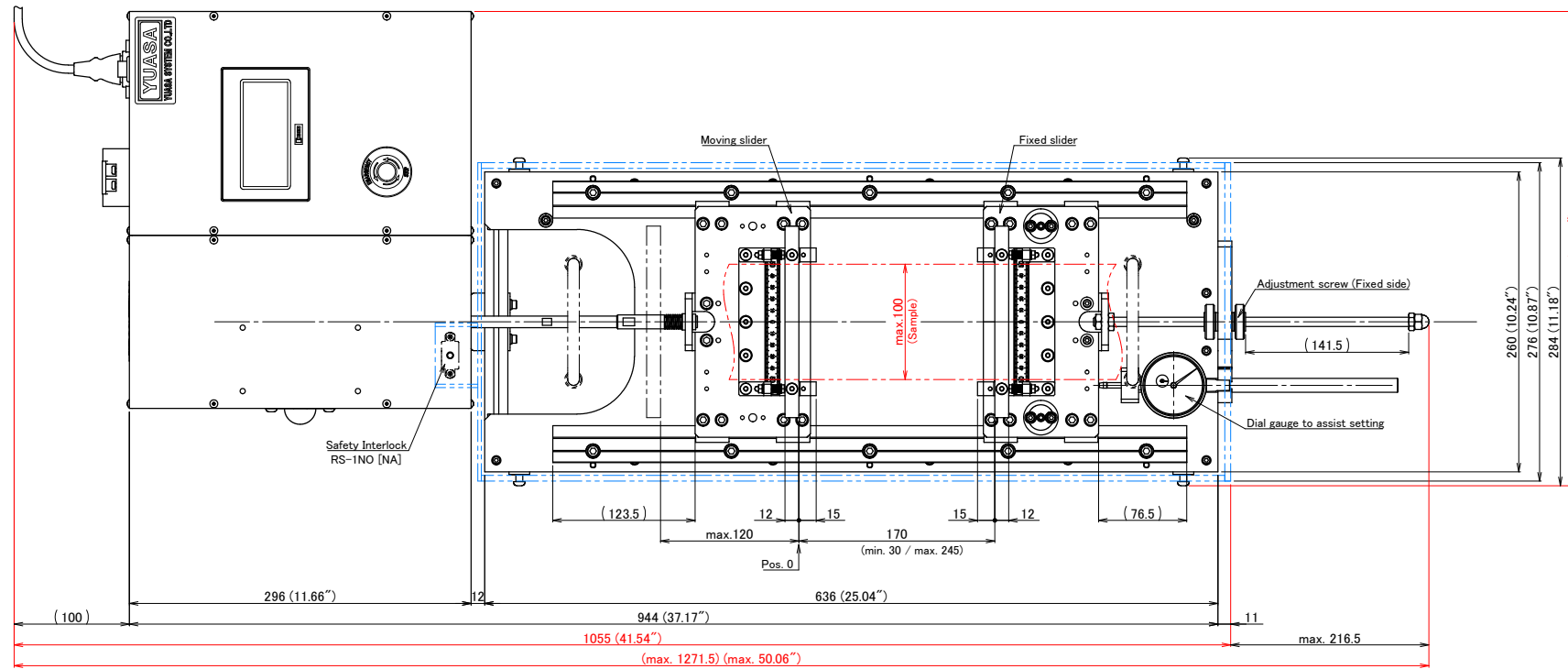


| 改訂 REV | 変更 内容 REVISION CONTENT | 担当者 BY | 日付 DATE |
|-----------|---------------------------------|-----------|---------------|
| A | Change to standard product | N. Ando | Jun. 28, 2018 |



| | |
|---------------------------------|---|
| OVER VIEW | <ul style="list-style-type: none"> Testing components stretch a sample repeatedly. Testing components do not measure the tension (the force of stretching.) |
| SPECIFICATION of TEST CONDITION | <ul style="list-style-type: none"> Target : Sheet or Linear samples Sample thickness : max. 3 mm Sample width : max. 100 mm Sample length : min. 30+(Clamping space) mm Stretching Length : max. 120 mm Ex. 30 mm ⇔ 150 mm (Strain: 500%) 240 mm ⇔ 360 mm (Strain: 50%) Tension : max. 70 N Stretching Speed : max. 90 rec./min. Electric Insulation : Samples are insulated from the slider. <p>* In addition, refer to an attached sheet for the detail of "DMLHP".</p> |
| ACCESSORY | <ul style="list-style-type: none"> Squashing gauges (to measure the gap of clamp.) |
| INSTALLATION ENVIRONMENT | <ul style="list-style-type: none"> Temp. : +5~+40°C (41~104°F) Humi. : 15~85%Rh |
| MASS | <ul style="list-style-type: none"> Testing Machine: about 15 kg (33.5 lb) Testing Jig : about 11 kg (23.9 lb) Cover, Test Jig: about 4 kg (8.2 lb) |
| NOTE | <ul style="list-style-type: none"> Can order the clampers according to the sample. |

- ◇Components in this drawing
- ET254005A001: Stretching
- ET256A004-002: Clamper Base
- ET256A005-001: Clamping Bar
- ET256A006-001: Squashing Gauge
- ET256A007-001: Mute Adjuster
- ET500A003-041: Safety Cover

| | | | |
|-------------------------------|-----------------------------------|----------------|-------------------------------------|
| 材質 MATERIAL | 第3角法 THIRD ANGLE PROJECTION | 尺度 SCALE | TITLE |
| 質量 MASS | On the margin | 1:3 | 名 Endurance Testing System DMLHP |
| 表面処理 SURFACE PROCESSING | 作成日付 DATE | 承認 APPROVED | 称 Stretching |
| 熱処理 HEAT TREATMENT | 検図 CHECKED | 設計 DESIGNED | 図 DWG. No. 番 ET254005A0001-A |