

Endurance Test Platform

Flexdata  **flexdata**



Endurance testing, over a network.

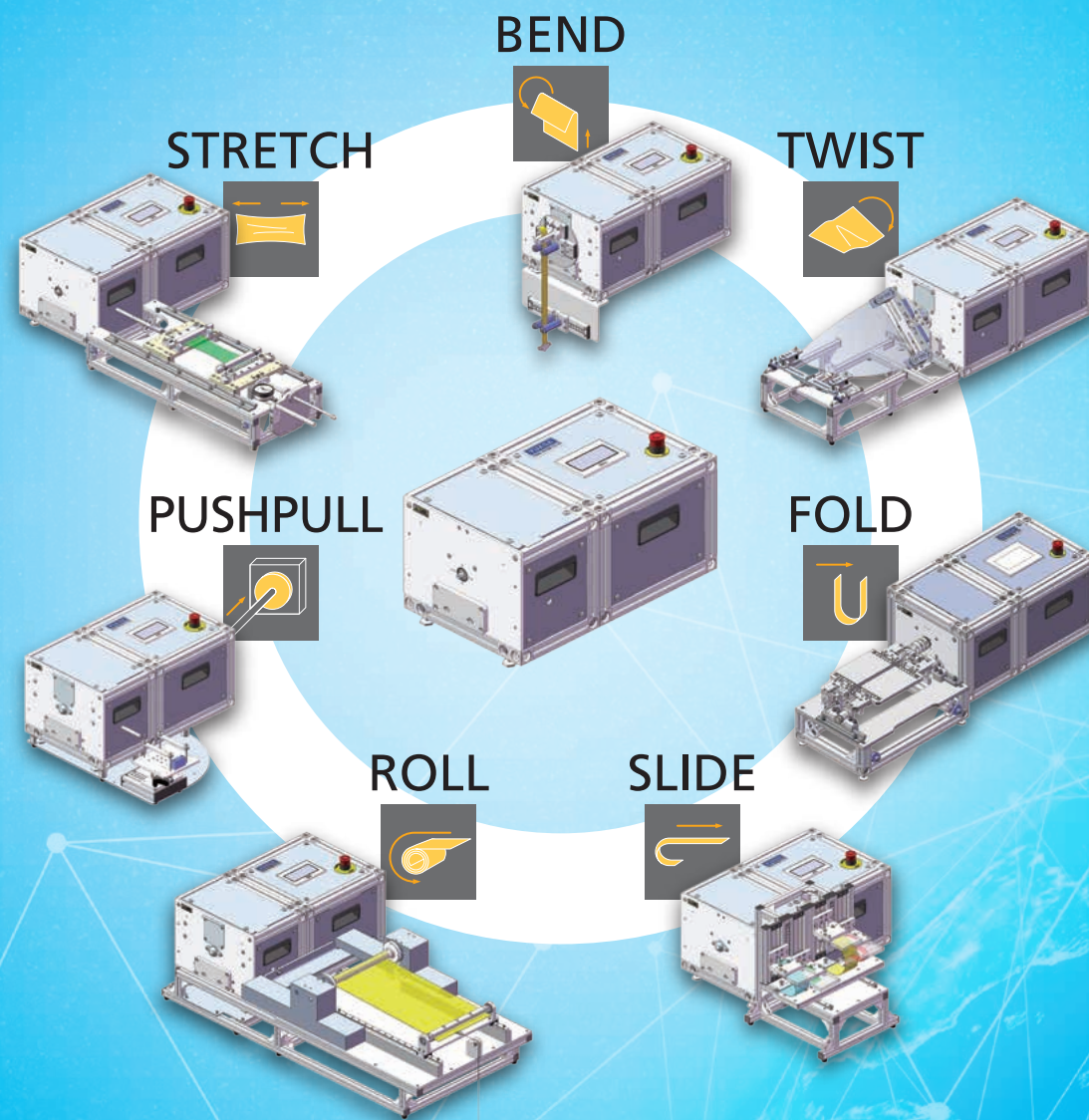
Bringing imagery, measurement,
and other data to the network

The Yuasa System endurance tester realizes a wide variety of endurance tests and provides a system that can effectively utilize data such as changing images and measurements which occur in test samples on the network.

Endurance Test Platform

Flexdata 

The endurance test platform "Flexdata" enables efficient and effective execution and data utilization of endurance tests by managing, sharing, and analyzing images and measurement data of changes occurring in test samples over a network.



Endurance Test Platform

Flexdata flexdata

01

Flexdata **BASIC**

Improving
test efficiency



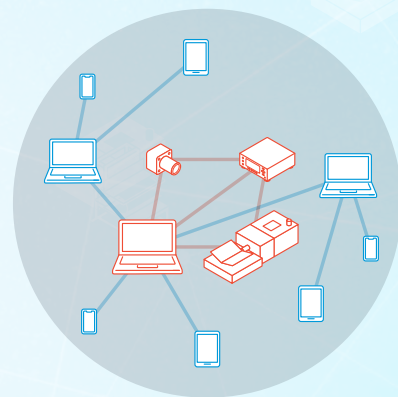
Simplify measurement and evaluation of endurance tests.

- Images and data can be stored simultaneously
- The process of change can be checked
- By visualized programming
- Easy to set up

02

Flexdata **PREMIUM**

Improving
organizational efficiency



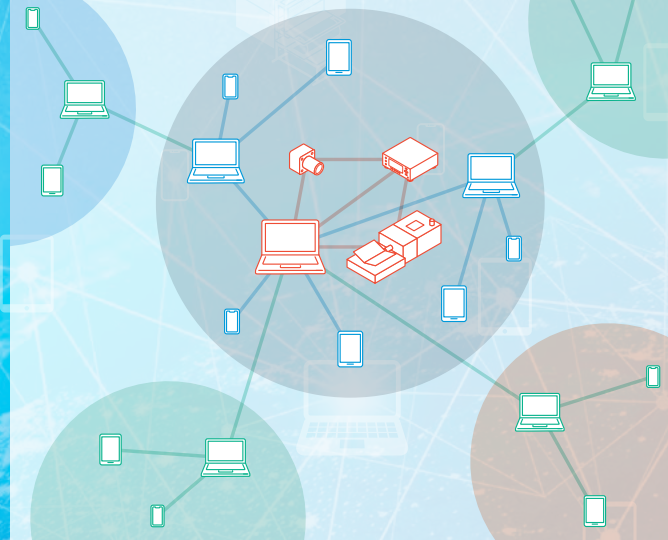
Get data in real time,
from anywhere in the world.

- Information can be shared with relevant parties within the company at the same time
- Remote monitoring and control of endurance testing are enabled
- Automatic saving of all data
- Data can be accessed from your own company site

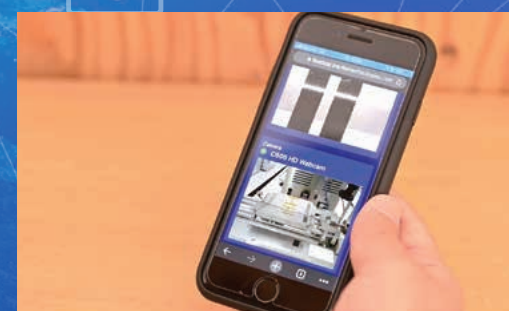
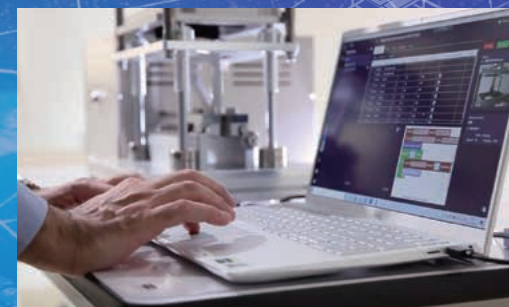
03

NEXT Flexdata

Improving
business efficiency



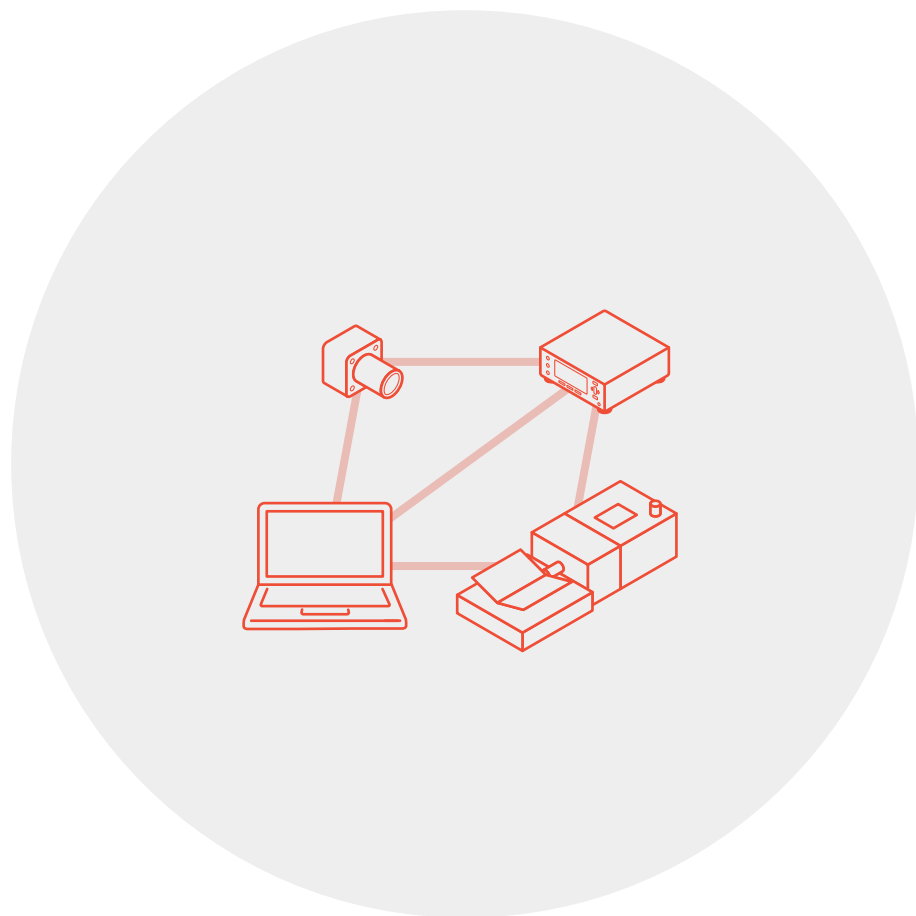
- To the supply chain network
- Evolution and optimization of testing applications



01 Flexdata BASIC

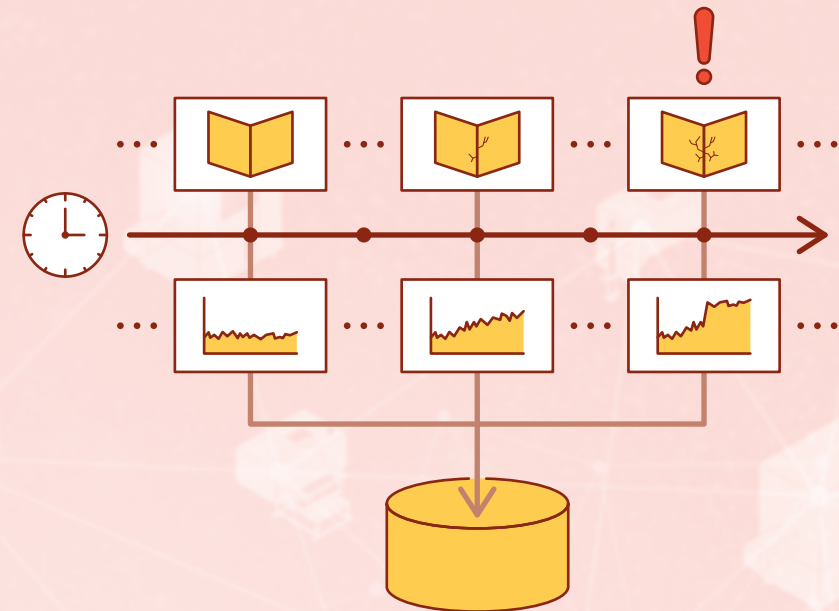
Improving test efficiency

Flexdata BASIC makes it easy to set up and set up endurance testers and instruments, and stores images of changes that have occurred in your samples with your data.



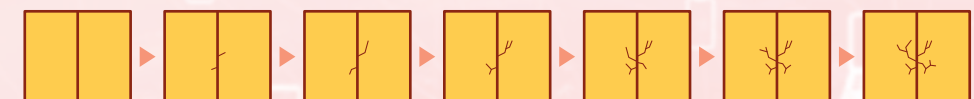
Images and data can be stored simultaneously

Images of changes that occurred in the sample can be linked to the data at the time of the change and saved, which is useful for analyzing the cause of the change.



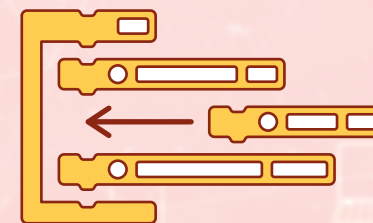
The process of change can be checked

The process leading to destruction can be viewed like a time-lapse image.



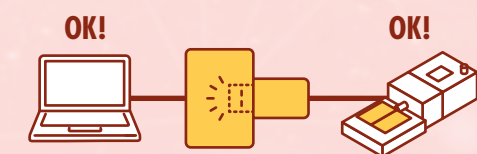
By visualized programming

Control and measuring timing can freely be set by visualized programming.



Easy to set up

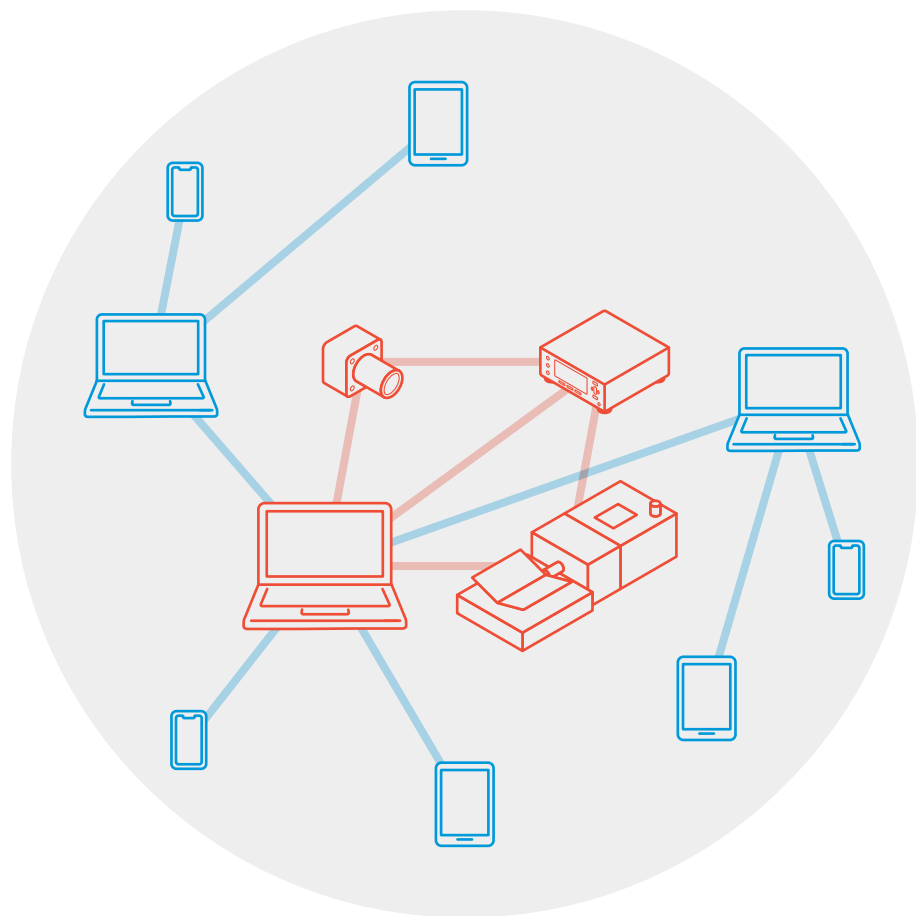
Easy to set and register the Endurance test machine, measuring equipment, and camera, etc. which are connected to PC.



02 Flexdata PREMIUM

Improving organizational efficiency

Flexdata PREMIUM allows real-time monitoring and control of endurance tests, automatic storage of all data, and simultaneous data sharing with relevant parties within the company.



Information can be shared with relevant parties at the same time

Since information can be shared simultaneously with relevant parties within the company, it is easier to understand and exchange opinions within the company based on the data, thereby increasing the efficiency of the organization.



Remote monitoring and control of endurance testing are enabled

The status and data of endurance tests can be remotely monitored and controlled from outside the test site.



Automatic saving of all data

Images and data of the state of endurance test samples are automatically stored.



Data can be accessed from your own company site

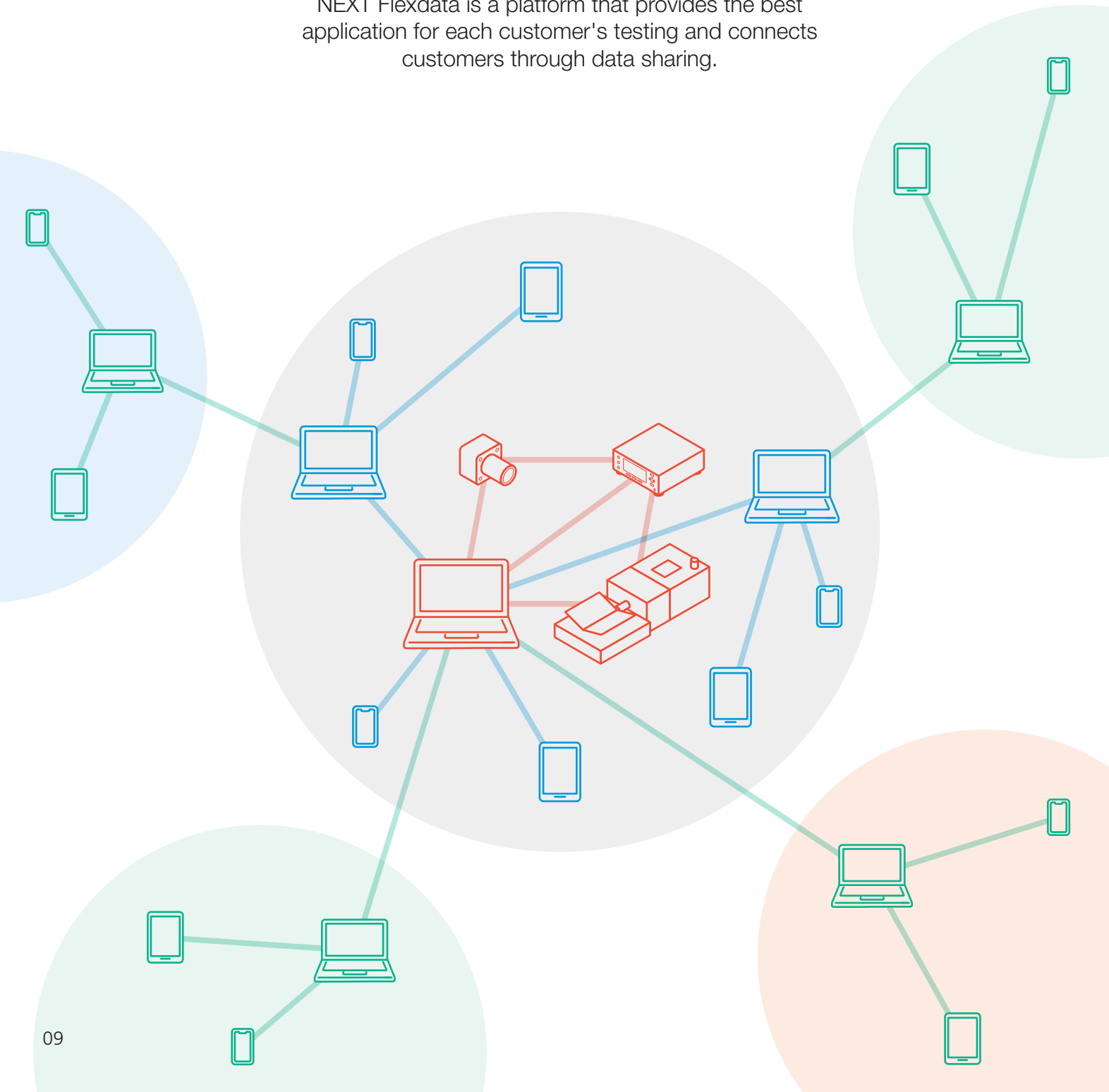
Stored data can be accessed at any time by anyone of relevant party within the company.



03 NEXT Flexdata

Improving business efficiency

NEXT Flexdata is a platform that provides the best application for each customer's testing and connects customers through data sharing.



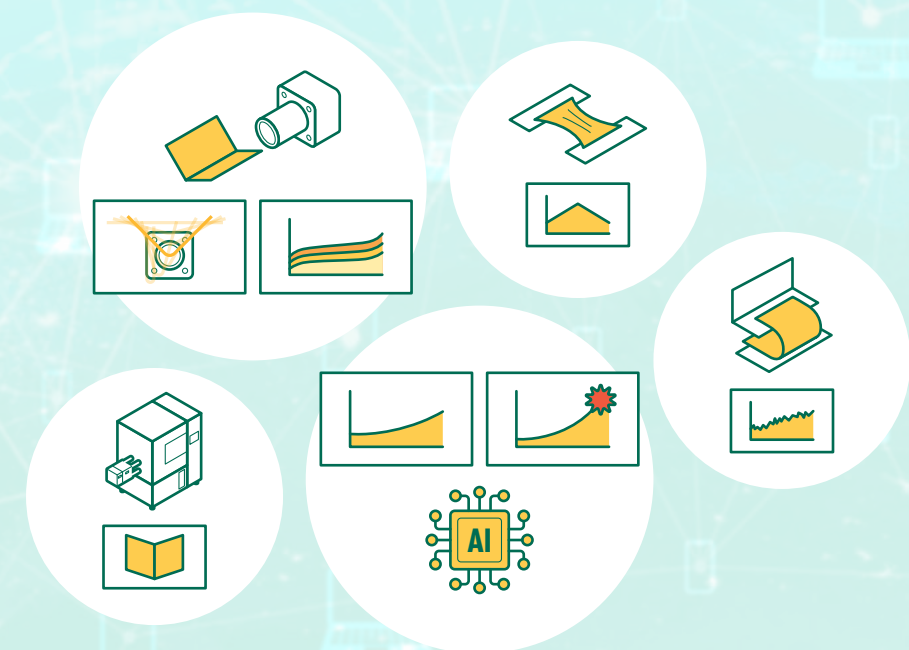
To the supply chain network

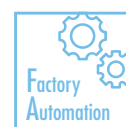
Based on data sharing with customers by granting access to data, we will build a network that enables such as remote business meeting to product manufacturers by supply chain customers.



Evolution and optimization of testing applications

We will develop and provide various applications tailored to each customer's endurance test, such as analysis of sample shape change and sample destruction prediction by AI.





YUASA SYSTEM CO., LTD.

Our product information is also available on
<https://www.yuasa-system.jp/en>



PHONE: +81-86-287-9030 FAX: +81-86-287-2298

HEAD OFFICE / FACTORY	2292-1 KIBITSU, KITA-KU, OKAYAMA-CITY 701-1341 JAPAN
R&D Lab	3204 TOMIYOSHI, KITA-KU, OKAYAMA-CITY 701-1133 JAPAN
TOKYO OFFICE	SHINBASHI SN BLDG. 5-7-10 SHINBASHI, MINATO-KU, TOKYO 105-0004 JAPAN
OSAKA OFFICE	8F, NLC SHIN-OSAKA EARTH-BLDG. 5-1-3 MIYAHARA, YODOGAWA-KU, OSAKA-CITY 532-0003 JAPAN



Safety Note To ensure your safe and proper usage, please observe all the manuals before using these machines.